

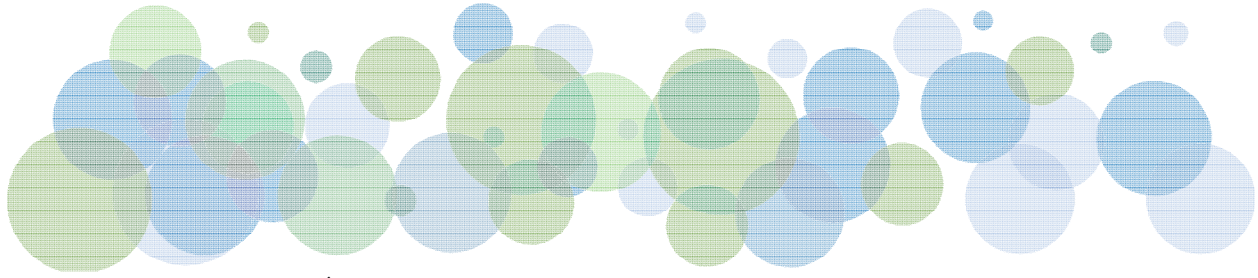
Consultation on catchment change begins

The Board of Education requested District staff begin the process of re-drawing school catchment boundaries for the school district to accommodate the opening in September 2025 of the new SCÍΛNEW STĒLIT̄KĒL Elementary School. Catchment refers to your designated neighbourhood school based on your home address. The catchment / boundary change below was presented to the public in an open house in February 2023 and an email was sent to families (with a student registered in the District) who live in this area for input.

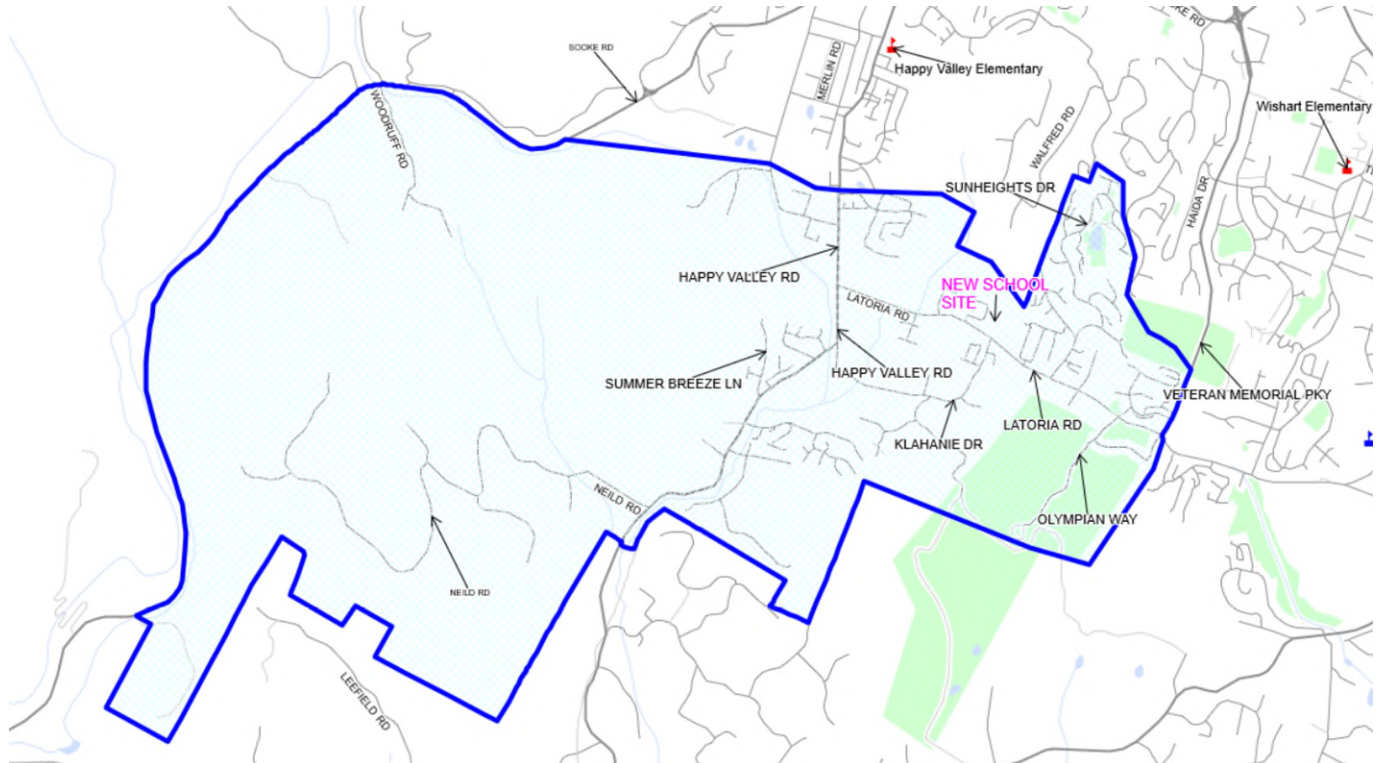
The following list of guiding principles are considered in the catchment boundary changes:

- Follow Board Policy F-502
- Proximity to feeder schools.
- Maximize existing space in all schools.
- Long-term sustainability.
- Minimize crossing of major roadways and maximize on current and future safe and active routes to schools.
- Ensure equity of opportunity and clear K-12 pathways when reviewing programs of choice.
- Minimize disruptions to students.
- Grandparent students in their own schools.
- Provide stability and a transparent process with opportunities for robust public engagement.
- Use natural boundaries as much as possible.

If you would like to share any further thoughts, please email: catch62@sd62.bc.ca



Boundary for SĆIANEW STEŁITKEŁ ELEMENTARY SCHOOL on Latoria Rd.
(Happy Valley and Wishart Changes)



This catchment area for SĆIANEW STEŁITKEŁ Elementary School will flow to Dunsmuir Middle School and then to Ecole Royal Bay Secondary.

September 2025

All Students will attend their new boundary catchment school. Under the Guiding Principles students can be grand parented into their current school, if space permits.